

LUXURY

QUALITY

INNOVATION



Zion SRT





SAFETY

TECHNOLOGY

DRIVABILITY

See the world your way

If you're yearning to see the sights but don't want to drive a large RV, this coach is for you. The large windows offer picturesque views, so you never miss a sight. The full kitchen offers ample storage space, including a large pot drawer and a slide-out pantry so you can bring everything you need for the perfect getaway. See the world your way with the Zion SRT!





CRAFTSMANSHIP

COMFORT

STYLE



Features

- Expanded galley includes a 5.0 cu. ft. refrigerator, microwave and abundance of interior storage, including a pull out pantry and large pot drawer
- Automatic propane heating system
- Interior permanent bathroom with shower and outdoor shower
- Forward facing power sofa that easily converts to a comfortable queen size bed

Floor plans

Take a step into your beautiful new Zion SRT by Roadtrek. As you turn from your driver's seat, you'll find a pop-in table to enjoy a card game or a nice meal. Looking ahead to your kitchen, you'll be able to prepare a delicious meal on your 2-burner propane stove, and keep your groceries fresh in your 5 cu. ft. refrigerator. You'll have ample storage space in the kitchen including a pull-out pantry and a deep pot drawer. As you make your way through the galley, you'll find a comfortable and spacious permanent bathroom with stand-up shower, and finally arrive to your power composite leather sofa that converts into a queen or two twin bed(s). End your day relaxed; watching your favorite movie on the 24" flat screen television.



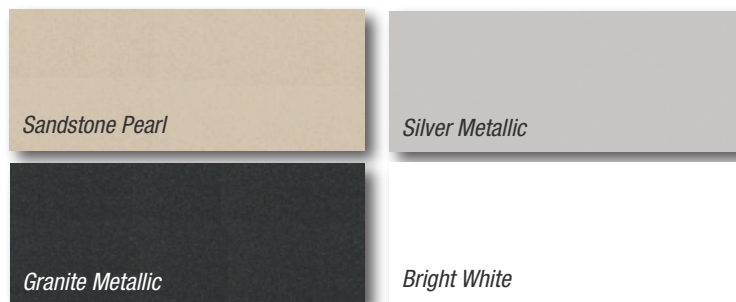
Interior floorplan of Zion SRT during the daytime



Interior floorplan of Zion SRT during the evening

Exterior paint options

Show your true colors by choosing the exterior paint that suits your design preferences; Sandstone Pearl, Silver Metallic, Granite Metallic and Bright White. Whichever color you choose, you're bound to ride in style.



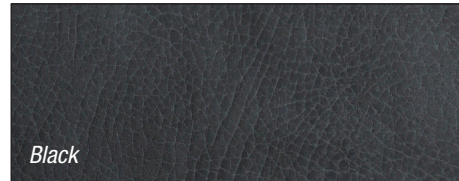
Main & accent fabric options

Accent your cabinetry and leather seating options with trendy accent fabric pillows, curtains and television cover.



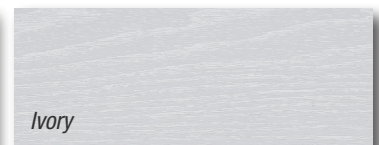
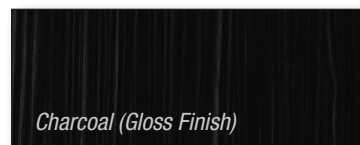
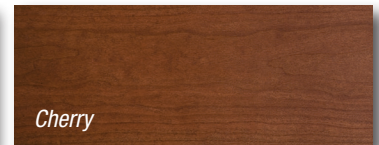
Leather seating options

Sink into the beautiful and soft leather seats in your new Zion SRT. You'll be sure to enjoy the ride with this added option!



Cabinetry options

Our cabinetry color options allow you to create the perfect look in your coach, making it feel like home.



Peace of Mind RV warranty

Roadtrek's six-year industry leading unlimited mileage warranty covers the manufacturing of the motorhome, appliances, electronics, plumbing and EcoTrek batteries. It is fully transferable from the first owner to the second owner.

*Original manufacturer's warranty on all appliances will be applied first. This warranty excludes the complete chassis (original chassis manufacturer warranty applies) and AGM batteries (AGM batteries have a normal one-year manufacturer's warranty.)

Chassis warranty

5-year/100,000-mile Powertrain Limited Warranty covering the cost of repairs on all covered powertrain components - engine, transmission and drive system for most new Ram vehicles. 3-year/36,000-mile Limited Warranty, provides bumper-to-bumper coverage of your vehicle, from the body to the electrical system. Refer to chassis manufacturer's website for complete details.

Innovative technology

EcoTrek is a lithium power module that revolutionizes the boondocking experience.

- Worry free battery management
- Module will charge and discharge in weather conditions from -40° to 120° F

VoltStart will automatically start engine to recharge batteries:

- No key required in the ignition
- Works anytime of the day or night

available with **ECOTREK**

Specifications

Base model	Ram ProMaster 2500 regular van
Travel capacity	Five
Sleeping capacity	Three
Dining	Front and rear
Engine	3.6 L gas, V6, 24 Valve
Batteries	400 AMP AGM
Exterior length*	19' 7" (5,969 mm)
Exterior width (without mirrors)	6' 11" (2,108 mm)
Interior aisle width	29" (737 mm)
Exterior height (with roof AC)	9' 5" (2,870 mm)
Interior standing height	6' 2" (1,905 mm)
Wheelbase	159" (4,039 mm)
Gross vehicle weight rating	8,900 lbs. (4,037 kg)
Occupant & cargo carrying capacity*	1,250 lbs. (567 kg)
Gross combined weight rating*	10,150 lbs. (4,604 kg)
Towing – tow weight*	2,000 lbs. (907 kg)
Towing – tongue weight*	300 lbs. (136 kg)
Fuel type	Gasoline
Fuel capacity	90.8 L / 24 U.S. gal.
Fresh water capacity	140 L/37 U.S. gal.
Black holding tank capacity	36.3 L/9.6 U.S. gal.
Gray holding tank capacity	86 L/22.8 U.S. gal.
Storage capacity	48.60 cu. ft.
Rear queen sleeping maximum (width x length)	72" x 62" (1,880 mm x 1,574 mm)
Front single bed sleeping (width x length)	33" x 70" (838 mm x 1,778 mm)



Every new Roadtrek purchased includes two years of roadside RV assistance for free!

Erwin Hymer Group North America, Inc. reserves the right to make changes at any time, without notice, in colors, materials, equipment, specifications and models. This information is intended as a guide only; please visit www.roadtrek.com for a complete list of specifications and options. Some motorhomes may be shown with equipment that is optional. Accessories shown in the photography are not included.

Coach Features

	Standard	Optional
Air conditioner – 110 V, 11,000 BTU roof mount	X	
Awning – 12' (4,000 mm) power awning	X	
Bathroom – permanently enclosed with sink & shower	X	
Battery – 400 AMP AGM	X	
Detectors – smoke, propane & CO	X	
Alde hydronic heat and hot water system		X
EcoTrek 400 lithium power module		X
External power connection - 110V	X	
Furnace – propane automatic, 16,000 BTU	X	
Generator – underhood 280 AMP, 12 V		X
Instant hot water 36,000 BTU with bypass	X	
Mattress – single folding		X
Microwave oven – 110 V, 20 L/0.7 cu. ft., 700 W	X	
Monitor panel – water, propane & battery charge levels & battery disconnect	X	
Outdoor shower	X	
Portable solar cell 200 W		X
Power inverter/converter/transfer switch – 12/110 V, 2,000 W	X	
Propane tank – 22 L/5.9 U.S. gal.	X	
Rear power sofa – forward facing with fabric upholstery	X	
Rear power sofa – forward facing with composite leather upholstery		X
Refrigerator – 12 V/110 V, 2-way compressor 5.0 cu. ft.	X	
Screen package – passenger side door, rear cargo door & side windows		X
Sewage disposal system – 12 V macerator sewage pump & gravity dump	X	
Solar charging system – 200, 270 or 300 W with charge controller		X
Stove – propane; two burner recessed with flush cover	X	
Stove – inductive cooktop (only available with Diesel Alde)		X
TV/Blu Ray – 24” HD flat screen on rotating bracket with remote and Blu-Ray DVD player		X
VoltStart - auto start battery protection technology		X

Chassis Features

	Standard	Optional
Airbag – driver & passenger	X	
Alternator – 220 AMP	X	
Axle – rear – 3.86 ratio	X	
Battery – 800 AMP	X	
Brakes – anti-lock (ABS), four wheel disc	X	
Camera – rearview backup	X	
Climate control	X	
Continental spare tire carrier & spare tire		X
Cruise control	X	
Engine – 3.6 L gas V6, 24 valve	X	
Power – 209 kW/280 HP	X	
Power mirrors	X	
Power front door step - Driver/Passenger		X
Power side entry door step	X	
Radio – Uconnect 5.0 - Sirius/USB/Steering wheel controls Bluetooth, AM/FM/CD/BT/aux/Voice command/GPS/NAV	X	
Receiver – Class III with wiring for trailer lights	X	
Stability program - including wind assist, sway assist, drift compensation, Trailer sway, engine drag control, rollover mitigation, Electronic stability control, Hillstart assist.	X	
Telescopic steering	X	
Tires – LT225/75R16E black wall	X	
Torque – 352 Nm/360 lb.-ft.	X	
Transmission – automatic 6-speed 6S TE	X	
Wheels – 16” aluminum polished	X	
Window operation – power; front doors only	X	

* Refer to www.roadtrek.com for more details.

ERWIN HYMER GROUP NORTH AMERICA, INC.

100 Shirley Avenue, Kitchener, ON Canada N2B 2E1

Toll-free: 1.888.ROADTREK (762.3873)

Phone: 519.745.1169

Fax: 519.745.1160

www.roadtrek.com

