

LUXURY

QUALITY

INNOVATION



SS AGILE





SAFETY

TECHNOLOGY

DRIVABILITY

Escape into your next vacation

The ultimate in drivability is here! Built on the short Mercedes Sprinter chassis, the SS Agile offers the conveniences of a fully-equipped motorhome with the ease of maneuvering. Enjoy the open concept design, fully-equipped kitchen, permanent bathroom and sleeping for two while you escape into your next vacation.





CRAFTSMANSHIP

COMFORT

STYLE



Features

- Fully equipped galley features a 3.1 cu. ft. refrigerator, convection microwave oven and two burner propane stove
- Automatic propane heating system
- Comfortable & spacious permanent bathroom with stand-up shower
- Heated driver & passenger seats
- Enhanced safety features including blind spot monitoring, collision & lane keeping assist, rear view camera & navigation system
- Seating for 5, sleeping for 2

Floor plans

Take a step into your beautiful new SS Agile by Roadtrek. As you turn from your driver's seat, you'll find a slide-out table to enjoy a card game or a nice meal. Looking ahead to your kitchen, you'll be able to prepare a delicious meal on your 2-burner propane stove, and keep your groceries fresh in your 3.1 cu. ft. refrigerator. As you make your way through the galley, you'll find a comfortable and spacious permanent bathroom with stand-up shower, and finally arrive to your power leather sofa that converts into a king or two twin bed(s) offering multiple sleeping options. End your day relaxed; watching your favorite movie on the 24" flat screen television.



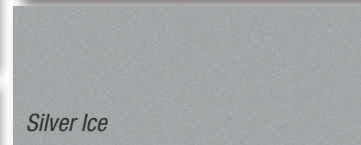
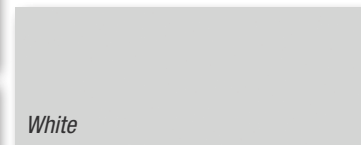
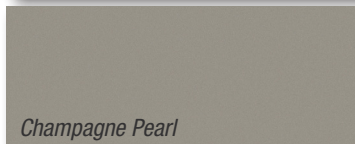
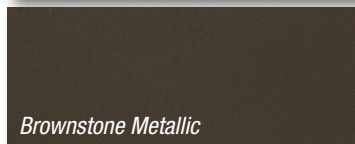
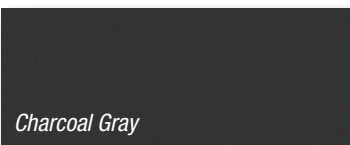
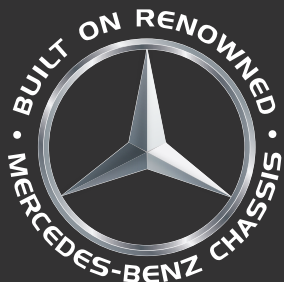
Interior floorplan of SS Agile during the daytime



Interior floorplan of SS Agile during the evening

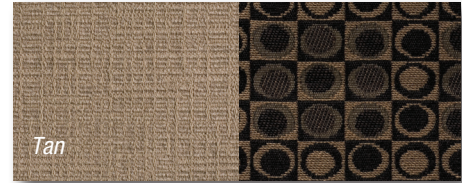
Exterior paint options

Show your true colors by choosing the exterior paint that suits your design preferences; Charcoal Gray, Brownstone Metallic, Champagne Pearl, White or Silver Ice. Whichever color you choose, you're bound to ride in style.



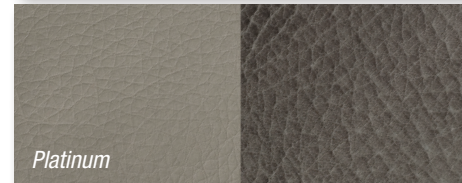
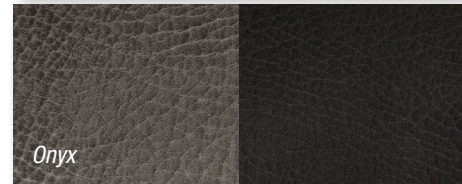
Main & accent fabric options

Accent your cabinetry and leather seating options with trendy accent fabric pillows, curtains and television cover.



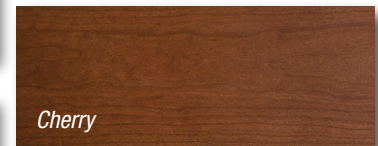
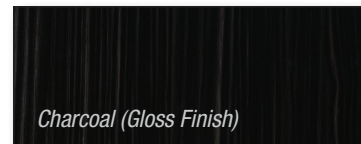
Leather seating options

Sink into the beautiful and soft leather seats in your new SS Agile. Choose between three color palettes; tan, onyx & platinum.



Cabinetry options

Our cabinetry color options allow you to create the perfect look in your coach, making it feel like home.



Peace of Mind RV warranty

Roadtrek's six-year industry leading unlimited mileage warranty covers the manufacturing of the motorhome, appliances, electronics, plumbing and EcoTrek batteries. It is fully transferable from the first owner to the second owner.

*Original manufacturer's warranty on all appliances will be applied first. This warranty excludes the complete chassis (original chassis manufacturer warranty applies) and AGM batteries (AGM batteries have a normal one-year manufacturer's warranty.)

Chassis warranty

3-year/36,000 mile or 60,000 km base limited warranty and 5-year/100,000 mile or 160,000 km limited diesel engine components warranty as offered by Mercedes. Refer to chassis manufacturer's website for details.

Innovative technology

EcoTrek is a lithium power module that revolutionizes the boondocking experience.

- Worry free battery management
- Module will charge and discharge in weather conditions from -40° to 120° F

VoltStart will automatically start engine to recharge batteries:

- No key required in the ignition
- Works anytime of the day or night

available with **ECOTREK**

Specifications

Base model	Mercedes Sprinter 2500
Travel capacity	Five
Sleeping capacity	Two
Dining	Front and rear
Engine	3.0L CRD V6 turbo diesel BlueTec®
Batteries	Two 6 V AGM, 2,400 W
Water heater	Propane with bypass, 23 L/6 U.S. gal., 12,000 BTU
Exterior length*	19' 5" (5,910 mm)
Exterior width (without mirrors)	6' 8" (2,025 mm)
Interior aisle width	28" (710 mm)
Exterior height (with roof AC)	9' 7" (2,920 mm)
Interior standing height	6' 3" (1,910 mm)
Wheelbase	144" (3,665 mm)
Gross vehicle weight rating	8,550 lbs. (3,878 kg)
Occupant & cargo carrying capacity*	1,500 lbs. (700 kg)
Gross combined weight rating*	13,550 lbs. (6,146 kg)
Towing – tow weight*	5,000 lbs. (2,268 kg)
Towing – tongue weight*	500 lbs. (227 kg)
Fuel type	Diesel
Fuel capacity	92.7 L / 24.5 U.S. gal.
Fresh water capacity	113 L/30 U.S. gal.
Black holding tank capacity	40 L/10 U.S. gal.
Gray holding tank capacity	75 L/20 U.S. gal.
Storage capacity	1,280 L/45 cu. ft.
Rear king sleeping maximum (width x length)	69" x 76" (1,750 mm x 1,930 mm)
Rear twin bed sleeping (width x length)	25" x 76" (635 mm x 1,930 mm)



Every new Roadtrek purchased includes two years of roadside RV assistance for free!

Erwin Hymer Group North America, Inc. reserves the right to make changes at any time, without notice, in colors, materials, equipment, specifications and models. This information is intended as a guide only; please visit www.roadtrek.com for a complete list of specifications and options. Some motorhomes may be shown with equipment that is optional. Accessories shown in the photography are not included.

Coach Features

	Standard	Optional
Air conditioner – 110 V, 11,000 BTU roof mount	X	
Awning – 9' 10" (3,000 mm) power awning	X	
Bathroom – permanently enclosed with shower	X	
Batteries – two 6 V AGM, 2,400 W	X	
Batteries – two additional 6 V AGM batteries		X
Connection – external – 110V / 30 AMP with detachable power cord	X	
Diesel Alde hydronic heat and hot water system		X
Detectors – smoke, propane & CO	X	
EcoTrek Lithium Power Module (400 AMP)		X
E-Trek + Package – EcoTrek Lithium power module (800 Amp), 370 W solar panels, VoltStart battery protection		X
Furnace – propane automatic, 16,000 BTU	X	
Generator – conventional – propane with remote-start, 2.5 kW		X
Generator (Under hood) – 12 V, 3,500 W, 2,500 W inverter		X
Home theater system with 5.1 surround sound & dual center speakers with DVD, CD, AM/FM radio, dual use rear speakers	X	
Microwave oven – 110 V convection, 28 L/1.0 cu. ft., 1,800 W convection/1,000 W microwave	X	
Monitor panel – water, propane & battery charge levels, battery disconnect & generator hour meter	X	
Portable solar cell 200W		X
Propane tank – 60 L/16 U.S. gal., 70 lbs.	X	
Rear power sofa with composite leather upholstery	X	
Refrigerator – 12 V/110 V compressor driven with thermostat, 3.1 cu. ft.	X	
Screen package – includes screen for rear cargo door & enhanced magnetic close screen for side door		X
Sewage disposal system – 12 V macerator sewage pump	X	
Solar charging system with charge control (200 W and 300 W available)		X
Stove – propane; two burner recessed with flush cover	X	
Stove – inductive cooktop (only available with Diesel Alde)		X
TV – 24" HD flat screen on rotating bracket with remote		X
VoltStart – Auto Start Battery Protection Technology		X
Water heater – propane with bypass, 23 L/6 U.S. gal., 12,000 BTU	X	
Water system – on demand 12 V with water pump	X	

Chassis Features

	Standard	Optional
Airbags – driver, passenger & thorax	X	
Alternator – 14 V/200 AMP	X	
Axle – rear – 3.92 ratio	X	
Battery – 760 AMP	X	
Brakes – anti-lock (ABS), four wheel disc	X	
Camera – rearview backup	X	
Climate control – electronic with glove box cooler	X	
Continental spare tire carrier		X
Cooling – transmission oil – external	X	
Cruise control	X	
Engine – 3.0L CRD V6 turbo diesel BlueTec®	X	
Headlights – automatic on/off	X	
Luxury chassis OEM option package	X	
Power – 120 kW/188 HP	X	
Radio – Mercedes Becker Map Pilot Navigation System with Bluetooth & on-dash keypad, audio 15 FM/AM, aux-in, USB	X	
Receiver – Class III	X	
Seats – Heated front driver and passenger	X	
Stability program – adaptive (accounts for load)	X	
Theft deterrent system	X	
Tilt steering	X	
Tire storage – rear storage area	X	
Tires – LT245/75R16E black wall	X	
Torque – 359 Nm/325 lb.-ft.	X	
Traction control	X	
Transmission – 5 speed transmission	X	
Wheels – 16" aluminum polished with spare		X
Window operation – power; front doors only	X	
Wiring harness for towing – E40 wire harness & 7 pin connector	X	

* Refer to www.roadtrek.com for more details.

ERWIN HYMER GROUP NORTH AMERICA, INC.

100 Shirley Avenue, Kitchener, ON Canada N2B 2E1

Toll-free: 1.888.ROADTREK (762.3873)

Phone: 519.745.1169

Fax: 519.745.1160

www.roadtrek.com

