

LUXURY

QUALITY

INNOVATION



E-trek





SAFETY

TECHNOLOGY

DRIVABILITY

A Boondocker's Dream

With the E-Trek's diesel fuel design, and solar charging system to help offset power use, you can enjoy being off-the-grid without increasing your carbon footprint. Bask in the amenities of this coach including comfortable seating for 7, sleeping for 4, full kitchen and technology that can't be matched. With the E-Trek, you can reduce your carbon emissions, not your travel!





CRAFTSMANSHIP

COMFORT

STYLE



Features

- Expanded galley features a 3.1 cu.ft. refrigerator, convection microwave & inductive cooktop
- 470W solar charging system
- Comfortable & spacious permanent bathroom with stand-up shower
- Heated driver & passenger seats
- Enhanced safety features including blind spot monitoring, collision & lane keeping assist, rear view camera & navigation system

Floor plans

Take a step into your environmentally friendly E-trek by Roadtrek, giving you the option to be off the grid! As you turn from your driver's seat, you'll find a pop-in table to enjoy a card game or a nice meal. Looking ahead to your kitchen, you'll be able to prepare a delicious meal on your inductive cooktop, and keep your groceries fresh in your 3.1 cu. ft. refrigerator. As you make your way through the galley, you'll find an enclosed permanent bathroom with stand-up shower, and finally arrive to your power composite leather sofa that converts into one king or two twin beds. End your day watching a movie on the 24" flat screen HD television.



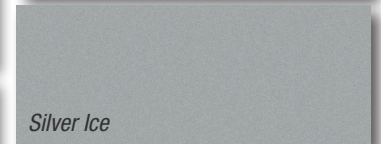
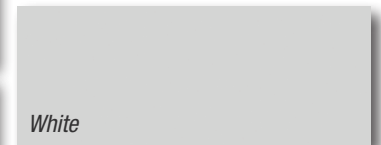
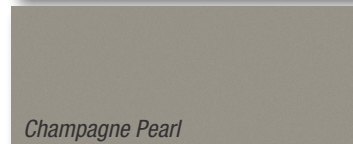
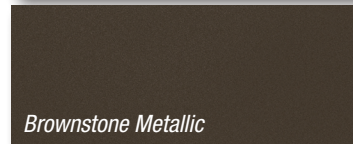
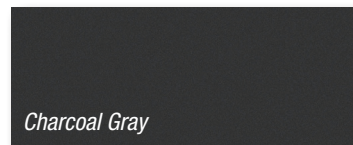
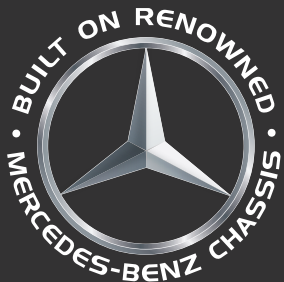
Interior floorplan of E-Trek during the daytime



Interior floorplan of E-Trek during the evening

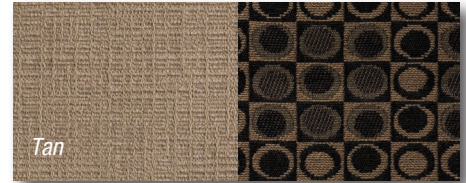
Exterior paint options

Show your true colors by choosing the exterior paint that suits your design preferences; Charcoal Gray, Brownstone Metallic, Champagne Pearl, White or Silver Ice. Whichever color you choose, you're bound to ride in style.



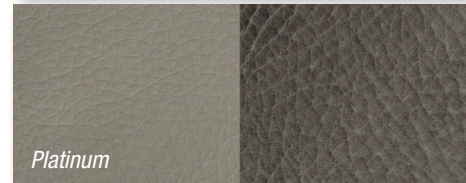
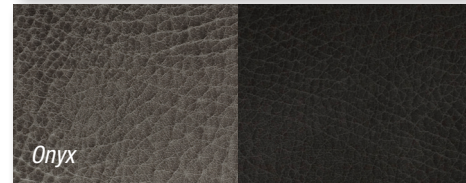
Main & accent fabric options

Accent your cabinetry and leather seating options with trendy accent fabric pillows, curtains and television cover.



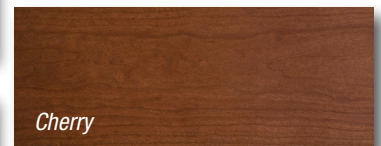
Leather seating options

Sink into the beautiful and soft leather seats in your new E-trek. Choose between three color palettes; tan, onyx & platinum.



Cabinetry options

Our cabinetry color options allow you to create the perfect look in your coach, making it feel like home.



Peace of Mind RV warranty

Roadtrek's six-year industry leading unlimited mileage warranty covers the manufacturing of the motorhome, appliances, electronics, plumbing and EcoTrek batteries. It is fully transferable from the first owner to the second owner.

*Original manufacturer's warranty on all appliances will be applied first. This warranty excludes the complete chassis (original chassis manufacturer warranty applies) and AGM batteries (AGM batteries have a normal one-year manufacturer's warranty.)

Chassis warranty

3-year/36,000 mile or 60,000 km base limited warranty and 5-year/100,000 mile or 160,000 km limited diesel engine components warranty as offered by Mercedes. Refer to chassis manufacturer's website for details.

Innovative technology

EcoTrek is a lithium power module that revolutionizes the boondocking experience.

- Worry free battery management
- Module will charge and discharge in weather conditions from -40° to 120° F

VoltStart will automatically start engine to recharge batteries:

- No key required in the ignition
- Works anytime of the day or night

available with **ECOTREK**

Specifications

Base model	Mercedes Sprinter 3500
Travel capacity	Seven
Sleeping capacity	Four
Dining	Front and rear
Engine	3.0L CRD V6 turbo diesel BlueTec®
Solar panel	470 W
Batteries	EcoTrek Lithium power module (800 Amp)
Water heater	Combination water heater/furnace 110 V, 9 L/2.5 U.S. gal.
Exterior length	22' 9" (6,945 mm)
Exterior width (without mirrors)	6' 8" (2,025 mm)
Interior aisle width	28" (710 mm)
Exterior height (with roof AC)	9' 7" (2,920 mm)
Interior standing height	6' 3" (1,910 mm)
Wheelbase	170" (4,325 mm)
Gross vehicle weight rating	11,030 lbs. (5,003 kg)
Occupant & cargo carrying capacity*	2,500 lbs. (1,150 kg)
Gross combined weight rating*	15,250 lbs. (6,915 kg)
Towing – tow weight*	5,000 lbs. (3,200 kg)
Towing – tongue weight*	500 lbs. (340 kg)
Fuel type	Diesel
Fuel capacity	92.7 L / 24.5 U.S. gal.
Fresh water capacity	113 L/30 U.S. gal.
Black holding tank capacity	40 L/10 U.S. gal.
Gray holding tank capacity	76 L/20 U.S. gal.
Storage capacity (with options)	1,430 L/51 cu. ft. (2,410 L/85 cu. ft.)
Rear king sleeping maximum (width x length)	69" x 78" (1,750 mm x 1,980 mm)
Rear twin bed sleeping (width x length)	25" x 78" (635 mm x 1,980 mm)
Front single bed (width x length: optional feature)	22" x 76" (560 mm x 1,930 mm)



Every new Roadtrek purchased includes two years of roadside RV assistance for free!

Erwin Hymer Group North America, Inc. reserves the right to make changes at any time, without notice, in colors, materials, equipment, specifications and models. This information is intended as a guide only; please visit www.roadtrek.com for a complete list of specifications and options. Some motorhomes may be shown with equipment that is optional. Accessories shown in the photography are not included.

Coach Features

	Standard	Optional
Air conditioner – 110 V, 11,000 BTU roof mount	X	
Air conditioner – undermount, 12V, 30,000 BTU with self shut off		X
Armoire – with adjustable shelves & drawers; interchangeable with passenger side 2nd row seat.		X
Awning – 13' 2" (4,000 mm) power awning	X	
Bathroom – permanently enclosed with sink & shower	X	
Batteries – EcoTrek 800 Amp	X	
Cabinet – permanent wardrobe – replaces driver side 2 nd row seat		X
Connection – external – 110V / 30 AMP with detachable power cord	X	
Detectors – smoke & CO	X	
Diesel Alde hydronic heat and hot water system	X	
Furnace – combination furnace/water heater, 16,000 BTU	X	
Generator (Under hood) – 12 V, 3,500 W, 2,500 W inverter		X
Home theater system with 5.1 surround sound & dual center speakers with DVD, CD, AM/FM radio, dual use rear speakers	X	
Mattress – single folding for 1 st & 2 nd row seats		X
Microwave oven – 110 V convection, 28 L/1.0 cu. ft., 1,800 W convection/1,000 W microwave	X	
Monitor panel – water & battery charge levels, battery disconnect & power monitoring	X	
Pantry – rounded half pantry with granite countertop (replaces 2nd row captain seat)		X
Portable solar cell 200W		X
Power inverter – 2 x 3,000 W. 12/110 V inverters	X	
Rear power sofa with composite leather upholstery	X	
Refrigerator – 12 V/110 V compressor driven with thermostat, 3.1 cu. ft.	X	
Screen package – includes screen for rear cargo door & enhanced magnetic close screen for side door		X
Sewage disposal system – 12 V macerator sewage pump	X	
Solar charging system with charge control 470 W	X	
Stove – 110 V flush-mounted one burner inductive cooktop	X	
TV – 24" HD flat screen on rotating bracket with remote		X
VoltStart – Auto Start Battery Protection Technology		X
Water heater – combination water heater/furnace, 110 V, 9 L/2.5 U.S. gal.	X	
Water system – on demand 12 V with water pump	X	

Chassis Features

	Standard	Optional
4 x 4 – on-demand all-wheel drive and manually selectable reduction gear with expanded adaptive electronic aids.		X
Airbags – driver, passenger & thorax	X	
Alternator – 14 V/220 AMP	X	
Axle – rear – 3.92 (USA) 4.18 (CAN) ratio	X	
Battery – 760 AMP	X	
Brakes – anti-lock (ABS), four wheel disc	X	
Camera – rearview backup	X	
Climate control – electronic with glove box cooler	X	
Cooling – transmission oil – external	X	
Cruise control	X	
Engine – 3.0 L CRD V6 turbo diesel BlueTec®	X	
Headlights – automatic on/off	X	
Luxury chassis OEM option package	X	
Power – 140 kW/188 HP	X	
Radio – Mercedes Becker Map Pilot Navigation System with Bluetooth & on-dash keypad, audio 15 FM/AM, aux-in, USB	X	
Receiver – Class III	X	
Seats – Heated front driver & passenger	X	
Stability program – adaptive (accounts for load)	X	
Theft deterrent system	X	
Tilt steering	X	
Tire storage – vehicle underside between axles	X	
Tires – LT215/85R16E black wall dual rear	X	
Torque – 440 Nm/325 lb.-ft.	X	
Traction control	X	
Transmission – automatic 5-speed heavy duty	X	
Wheels – 16" aluminum polished with steel spare		X
Window operation – power; front doors only	X	
Wiring harness for towing – E40 wire harness & 7 pin connector	X	

XL Chassis Package Options

The XL chassis option features a 24'1" extended Sprinter body and includes a rear access upper cabinet storage area and removable golf club bar.

Optional coach features only available with the XL chassis include;

- Cabinet – drop down rear power cabinet for additional storage
- Headboard – stylish removable headboard with shelf
- Warp Core package – EcoTrek Lithium power module (1600 AMP) with 600W solar panel

ERWIN HYMER GROUP NORTH AMERICA, INC.

100 Shirley Avenue, Kitchener, ON Canada N2B 2E1

Toll-free: 1.888.ROADTREK (762.3873)

Phone: 519.745.1169

Fax: 519.745.1160

www.roadtrek.com

