



170 Versatile

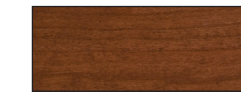
170 Versatile



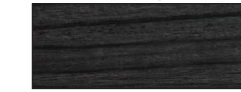
Travel Capacity	Six
Sleeping Capacity	Four
Dining	Front & rear
Engine	4.8 L SFI gas V8
Batteries	One 12 V AGM, 1,200 W
Water Heater	Propane with bypass, 23 L/6 U.S. gal., 12,000 BTU
Water Capacity	
Fresh	75 L/20 U.S. gal.
Black	30 L/8 U.S. gal.
Gray	85 L/23 U.S. gal.
Tow Weight	5,400 lbs. (2,450 kg)
Tongue Weight	1,000 lbs. (450 kg)
RV Warranty	5 year unlimited mileage/ km, RV limited warranty covering the manufacture of the motorhome only (excludes chassis)

Interior Color Options

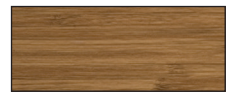
Cabinetry



Cherry

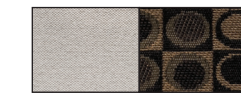


Ebony

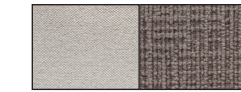


Bamboo

Main & Accent Fabric



Tan

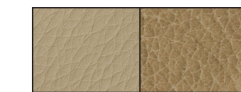


Onyx

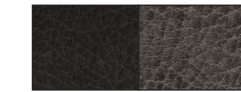


Platinum

Leather Seating



Tan



Onyx

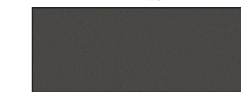


Platinum

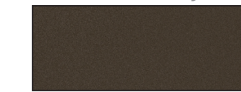
Exterior Paint Options



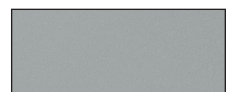
White



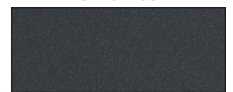
Charcoal Gray



Brownstone Metallic



Silver Ice



Gray Metallic*

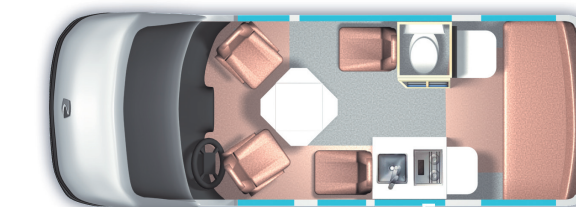
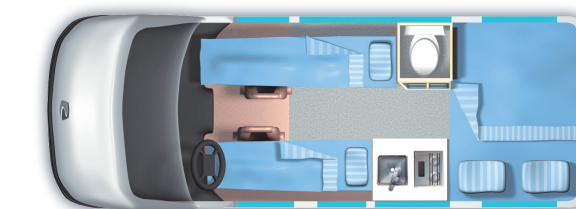
The freedom to travel often

Named for its ability to change right along with its passenger's needs, the 170 Versatile combines convenience, comfort, efficiency and value all in one stylish package. Ideal for an active family heading to a sporting event or a couple looking to get away from it all, the 170 Versatile offers you all the amenities of a larger motorhome with the added benefit of driveability, parking ease and fuel efficiency. With seating for up to six, sleeping up to four and tons of storage space, the 170 Versatile is the perfect combination of functionality and style.



Features

- Galley features 3.0 cu. ft. refrigerator, two burner recessed stove and extensive storage
- Power sofa easily converts to a comfortable double bed
- Optional permanent cabinet for extra hanging or shelf space
- Separate eating and sleeping areas



170 Versatile

Specifications

Exterior length	18' 9" (5,720 mm)
Exterior width (without mirrors)	6' 7" (2,007 mm)
Interior aisle width	30" (760 mm)
Exterior height	8' 9" (2,660 mm)
Interior standing height	6' 1" (1,855 mm)
Wheelbase	135" (3,430 mm)
Gross vehicle weight rating	8,600 lbs. (3,900 kg)
Occupant & cargo carrying capacity*	1,250 lbs. (500 kg)
Gross combined weight rating*	13,000 lbs. (5,897 kg)
Towing – tow weight*	5,400 lbs. (2,450 kg)
Towing – tongue weight*	1,000 lbs. (450 kg)
Fuel type	Gas
Fresh water capacity	75 L/20 U.S. gal.
Black holding tank capacity	30 L/8 U.S. gal.
Gray holding tank capacity	85 L/23 U.S. gal.
Storage capacity (with options)	930 L/33 cu. ft. (1,400 L/49 cu. ft.)
Rear double bed sleeping maximum (width x length)	50" x 73" (1,260 mm x 1,855 mm)
Front single bed - Left (width x length)	22" x 58" (560 mm x 1,470 mm)
Front single bed - Right (width x length)	22" x 74" (560 mm x 1,880 mm)

* Refer to www.roadtrek.com for more details.

RV Warranty

5 year unlimited mileage/km, RV limited warranty covering the manufacture of the motorhome only (excludes chassis).

Chassis Warranty

3 year/36,000 mile or 60,000 km limited "bumper to bumper" warranty and 5 year/100,000 mile or 160,000 km limited powertrain warranty as offered by General Motors. Refer to chassis manufacturers' website for details.

Roadtrek Motorhomes Inc. reserves the right to make changes at any time, without notice, in colors, materials, equipment, specifications and models. This information is intended as a guide only; please visit www.roadtrek.com for a complete list of specifications and options. Some motorhomes may be shown with equipment that is optional. Accessories shown in the photography are not included.

Coach Features

	Standard	Optional
Air conditioner – 110 V, 10,200 BTU	X	
Armoire – interchangeable with right lounge seat		X
Awning – 9' 10" (3,000 mm) power awning	X	
Bathroom – temporarily enclosed with bifold door	X	
Batteries – one 12 V AGM, 1,200 W	X	
Cabinet – permanently replaces driver side lounge seat		X
Connection – external – 110 V	X	
Detectors – smoke, propane & CO	X	
Furnace – propane automatic, 16,000 BTU	X	
Generator – conventional – gasoline with remote-start, 2.8 kW		X
Generator – under-hood		X
Generator/alternator – engine mounted 12 V 3,500 W		X
Home theater system with 5.1 surround sound & dual center speakers with DVD, CD, AM/FM radio, dual use rear speakers	X	
Mattress – single folding for 1 st & 2 nd row seats		X
Microwave oven – 110 V, 20 L/0.7 cu. ft., 700 W	X	
Monitor panel – water, propane & battery charge levels, battery disconnect & generator hour meter	X	
Power converter with charger – 110/12 V, 3-step 45 AMP charger	X	
Power inverter – 12/110 V, 750 W	X	
Propane tank – 38 L/10 U.S. gal., 45 lbs.	X	
Rear power sofa – fabric	X	
Rear power sofa – faux leather		X
Refrigerator – 12 V/110 V propane, 3.0 cu. ft. with auto source selection	X	
Seats – passenger side 2 nd row captain seat		X
Screen package – side door windows, side door & rear door		X
Sewage disposal system – 12 V macerator sewage pump	X	
Solar charging system - daylight - 200 W with charge controller		X
Storage compartments (exterior) – one below floor	X	
Stove – propane; two burner recessed with flush cover	X	
TV – 22" HD flat screen on rotating bracket with remote		X
Water heater – propane with bypass, 23 L/6 U.S. gal., 12,000 BTU	X	
Water system – on demand 12 V with water pump	X	

Chassis Features

	Standard	Optional
Airbag – driver & passenger (with passenger on/off switch)	X	
Alternator – 145 AMP	X	
Axle – rear – 3.42 ratio	X	
Battery – 600 AMP	X	
Brakes – anti-lock (ABS), four wheel disc	X	
Camera – rearview backup	X	
Climate control	X	
Continental spare tire carrier		X
Cooling – transmission oil – external	X	
Cruise control	X	
Engine – 4.8 L SFI gas V8	X	
Fender flares		X
Headlights – automatic on/off	X	
Mirrors (exterior) – power, heated with convex OnStar®	X	X
Power – 213 kW/285 HP	X	
Radio – audio system with navigation, AM/FM stereo with MP3 compatible CD/DVD player & navigation, USB port, seek-and-scan, digital clock, auto-tone control, Radio Data System (RDS), speed-compensated volume & TheftLock®	X	
Receiver – Class IV		X
Stability program	X	
Theft deterrent system	X	
Tilt steering	X	
Tire storage – rear storage area	X	
Tires – LT245/75R16E black wall	X	
Torque – 398 Nm/295 lb.-ft.	X	
Transmission – automatic 6-speed heavy duty	X	
Wheels – 16" aluminum polished with steel spare		X
Window operation – power; front doors only	X	
Wiring harness for towing – 4-way & 7-way connector	X	

Find Your Roadtrek



www.roadtrek.com

Connect With Us



facebook.com/roadtrek



twitter.com/roadtrekmh



youtube.com/roadtrekmotorhomes



Your destination awaits

Roadtrek Motorhomes Inc. 100 Shirley Avenue, Kitchener, ON Canada N2B 2E1 | Toll-free: 1.888.ROADTREK (762-3873) | Phone: 519.745.0711 | Fax: 519.745.1170